

Approved: 1/7/10

GEC Meeting Dec. 3 2009

7:08 meeting starts

Mike O'Meara, Gene Wyatt, Tony Nessaralla, Mark Beaton, Pine duBois

Dan Sheehan, Peter Cobb, visiting public

Update from Tom Bott related by Mark Beaton on constraints maps by W & S. Two Maps provided: see attached

Dec 17th will provide site-specific turbines within the constraints shown on the maps.
Meeting set for 7:00PM

Informal discussion of turbine on landfill, costs increase for foundation, state incentives, Hull and Falmouth projects.

Mark makes motion, second by Mike to accept the minutes of previous meeting, November 19, 2009 VOTED: 4-0-1 (Gene abstains as he was not there)

Further info from Mark Beaton: Tom Bott says that windspire is not eligible for DOER grant application. We will go forward with solar "car port" idea

Mark will get data from first year for fuel consumption—and charts for committee to present to BOS in order to urge Selectmen to make recommendations to reduce consumption. GEC members should check out ICLEI <http://www.iclei.org/> Access is Passwd and USER [information provided by Mark](#)

STRETCH Zoning and Zoning of Right for spring town meeting- TM articles need to be prepared. Mark will talk to Tom Bott get boiler plate language in order to get an understanding of the definitions and scope of the proposed by-laws. GEC will digest and determine course of action to get ready to move articles in the Spring.

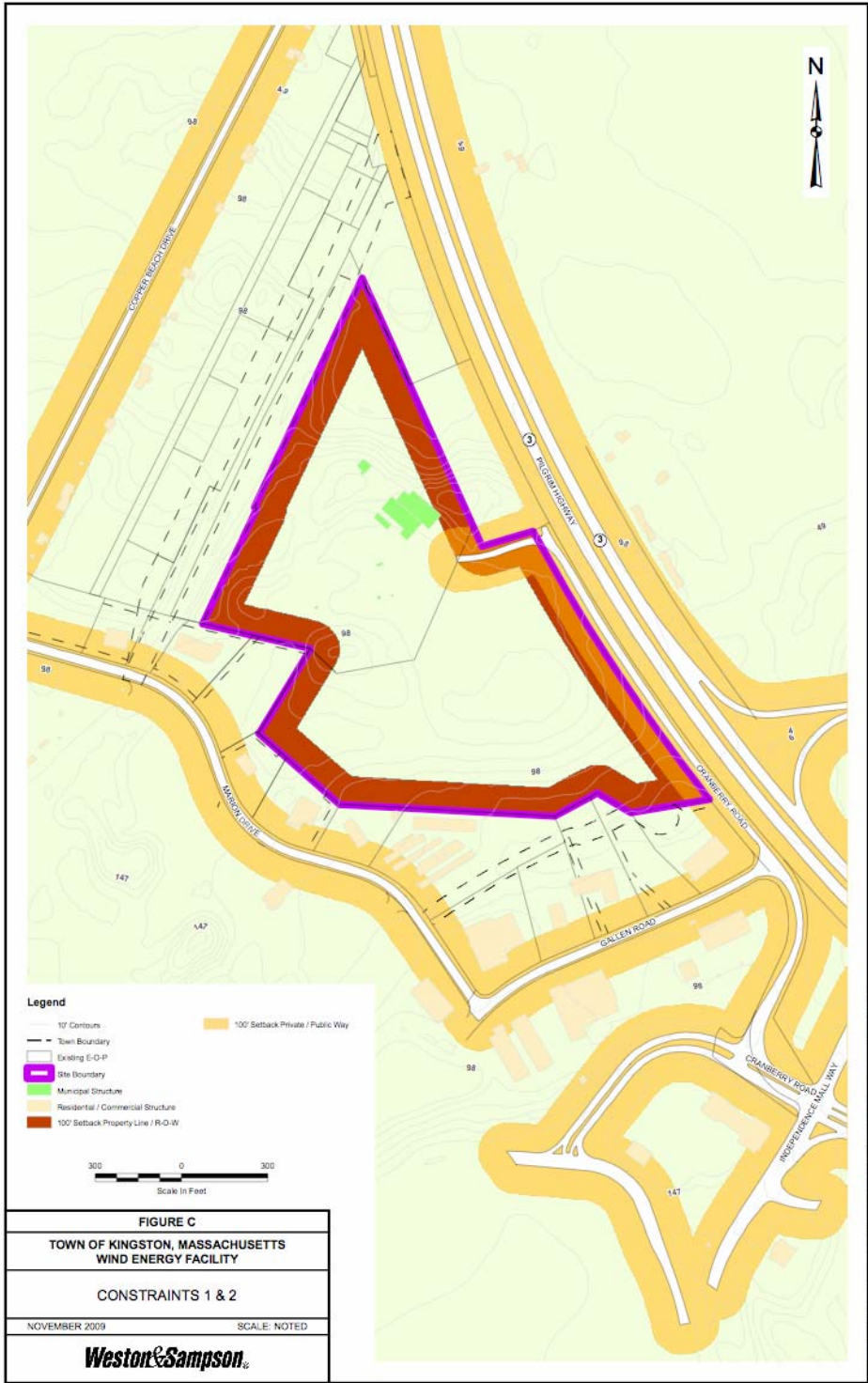
Mike reports: Letter to Brian, which was emailed to GEC members for review, will be finalized soon.

Mark left at 7:45

Discussion of Bio diesel with good information provided by Tony. Savings, nuance of good sources for vegie oil and discussion of how to advance information for town departments

Motion to adjourn by Gene, Second Tony all in favor at 8PM

Respectfully submitted:
Pine duBois



Legend

- 10' Contours
- Town Boundary
- Existing E-G-P
- Site Boundary
- Municipal Structure
- Residential / Commercial Structure
- 100' Setback Property Line / R-O-W
- 100' Setback Private / Public Way

300 0 300
Scale In Feet

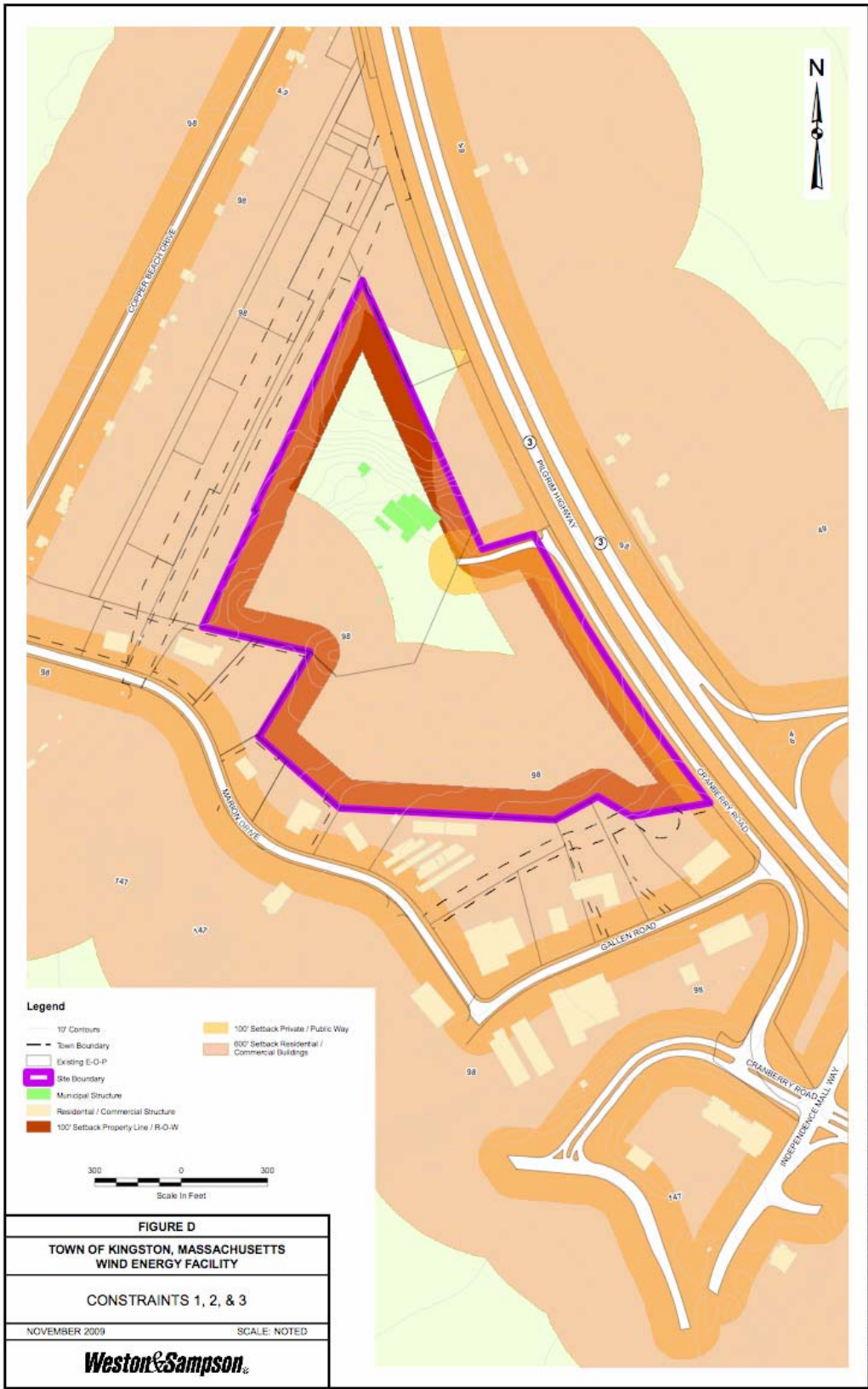
FIGURE C

TOWN OF KINGSTON, MASSACHUSETTS
WIND ENERGY FACILITY

CONSTRAINTS 1 & 2

NOVEMBER 2009 SCALE: NOTED

Weston & Sampson



Legend

— 10' Contours	100' Setback Private / Public Way
- - - Town Boundary	600' Setback Residential / Commercial Buildings
□ Existing E-O-P	
▭ Site Boundary	
■ Municipal Structure	
■ Residential / Commercial Structure	
■ 100' Setback Property Line / R-O-W	

300 0 300
Scale In Feet

FIGURE D
TOWN OF KINGSTON, MASSACHUSETTS
WIND ENERGY FACILITY
CONSTRAINTS 1, 2, & 3
 NOVEMBER 2009 SCALE: NOTED
Weston & Sampson

DATE: 11/10/09 1:00:00 PM PROJECT: WIND ENERGY FACILITY TOWN OF KINGSTON, MASSACHUSETTS CONSTRAINTS 1, 2, & 3